

WHY WE GIVE TO THE GREGG COUNTY HISTORICAL MUSEUM



"We value our extensive Caddo Collection and want our grandchildren to learn the importance of this culture to our area. It's a part of our Legacy to each of them."

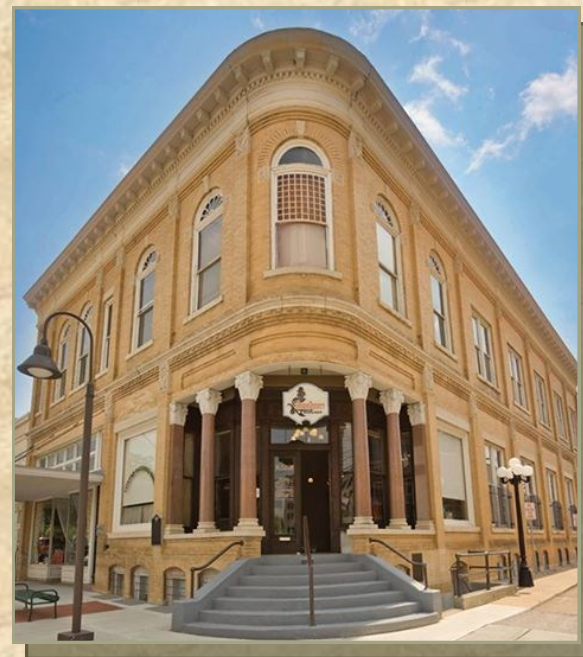
--Frank and Darba Jackson

With your Legacy Gift, the Gregg County Historical Museum can continue to preserve, protect and exhibit the heritage and history of Gregg County for future generations.

The Foundation is a 501(c)3 not-for-profit charitable/educational organization. Contributions to the Gregg County Historical Foundation, benefiting the museum, are tax deductible to the extent provided by law.



Your Museum Your History



Your Legacy



THE POWER OF LEGACY GIVING

AS PEOPLE WHO LOVE HISTORY, you have the power to strengthen and protect our heritage. Institutions like the Gregg County Historical Museum keep history relevant—today, tomorrow and beyond. Monetary gifts from you would help make this goal a realization for generations to come.

All the material things you have worked for are the tools of charitable gift planning, tools that allow you to leave your personal legacy. Planned gifts can provide you with valuable tax benefits, and even an additional source of income for life. They also allow you to express your beliefs and values.

IT'S EASY to designate the Gregg County Historical Foundation as a recipient of your planned gift. Call us at 903-753-5840 and speak confidentially with the Executive Director, or email us at director@gregghistorical.org. The Legacy Giving program will be administered under the auspices of the Trust Department at Texas Bank and Trust.



"From Caddo culture to the East Texas oil boom, our Gregg County Historical Museum and the beautiful 1910 Everett Building bring our area's rich history to life. Historian David McCullough said, 'History is who we are and why we are the way we are.' We urge your support of the museum, a link to our past and a bridge to our future."

--Van and Bettye Craddock



"Our community, state and nation benefit from the knowledge of history. Knowing our past helps in understanding the present and future. We enjoy visiting historical museums and sites; it's fun!"

--Dick and Bonnie Dial



LEAVE A LEGACY...BE A LEGACY

The Legacy Society

AS A DONOR, you can leave your gift unrestricted so the foundation can apply it toward the areas of greatest need; or you can designate your gift with a specific purpose in mind.

We are here to assist you in planning your gift to achieve the greatest benefit for you and the Gregg County Historical Foundation. Even a modest-sized gift can make an enormous difference.

When you finalize your planned gift, you become a member of the *Legacy Society*, which allows us to recognize you appropriately for your generosity, foresight, and dedication to the museum.

AS A MEMBER OF THE *Legacy Society*, you will be invited to events that connect you with other museum supporters where you can be recognized for your important commitment.